

**6 CYLINDERS IN LINE - DIESEL CYCLE**

607 kW (825 HP) @ 2400 rpm (A1)  
 552 kW (750 HP) @ 2400 rpm (A2)  
 478 kW (650 HP) @ 2400 rpm (B)  
 442 kW (600 HP) @ 2400 rpm (C)

**Specifications**

Thermodynamic cycle		Diesel 4 stroke
Air intake		TAA
Arrangement		6L
Bore x Stroke	mm	135 x 150
Total displacement	l	12.88
Valves per cylinder	n.	4
Cooling system		liquid
Direction of rotation (viewed facing flywheel)		CCW
Engine management		electronic
Injection system		Electronic Unit Injector (E.U.I.)

**Electrical system**

Voltage	V	24
---------	---	----

**Standard configuration**

Flywheel housing	type	SAE 1
Flywheel size	inch	14
Air filter		rear side
Turbocharger		Two Waste Gate (water cooled) Turbo in parallel with Aftercooler (TAA)
Double water circuit heat exchanger		tube type
Exhaust gas - water mixer		-
Water charge tank		included
Fuel filter	n.	1 - right side
Fuel prefilter		1 (loose)
Fuel pump		gear driven
Oil filter	n.	2
Oil sump		aluminium
Oil vapours blow-by circuit		included
Oil heat exchanger		included
Oil filler		on timing cover
Starting motor		24V - 5.5kW
Alternator		28V - 90A
Engine stop device		by electronic central unit
Wiring harness		with EDC (Engine Diesel Control)
Painting	color	white "ICE"

**Not included in the standard configuration**

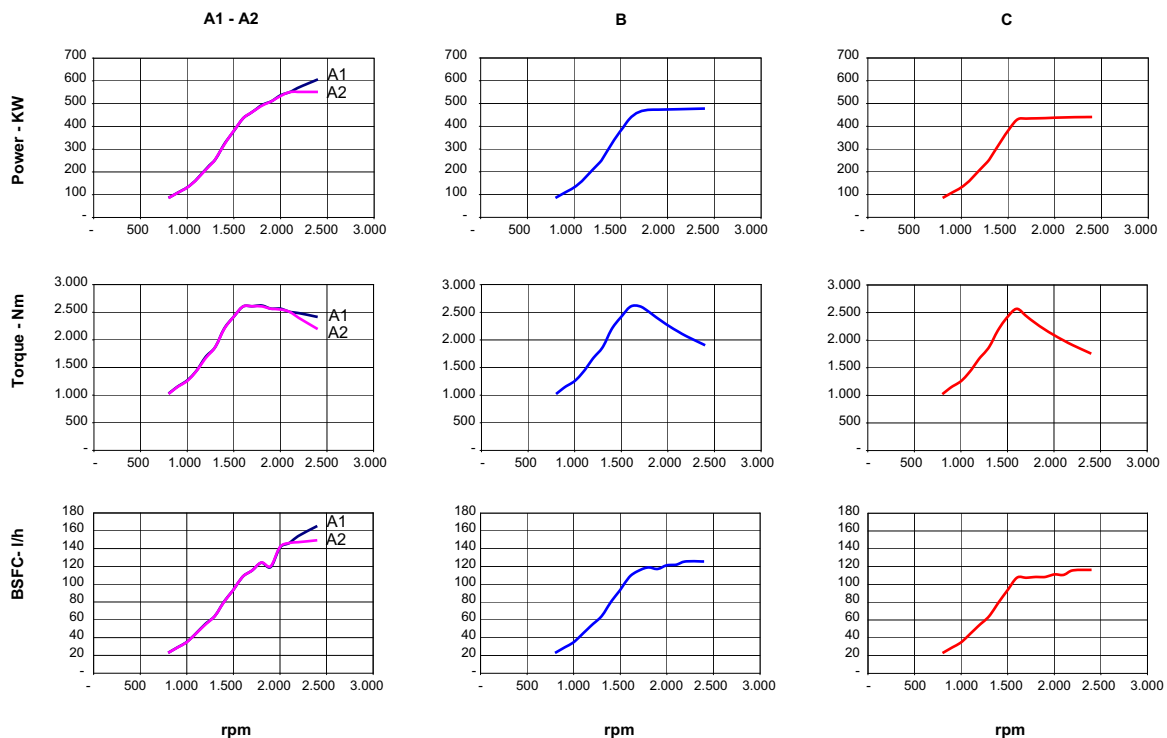
Battery - minimum capacity recommended		2 x 180 Ah
Battery - minimum cold cranking capacity recommended		1200 A

FPT OFFERS THE WIDEST AVAILABILITY OF ENGINE BUILD OPTIONS TO CUSTOMER SPECIFIC REQUIREMENTS WITHIN THE ENGINE SUPPLY. TO FIND OUT MORE ABOUT THE CONFIGURATIONS AND ACCESSORIES WHICH ARE AVAILABLE, CONTACT THE FPT SALES NETWORK.

Rating type		A1	A2	B	C
Maximum power [*]	kW(HP)	607 (825)	552 (750)	478 (650)	442 (600)
At speed	rpm	2400	2400	2400	2400
Maximum no load governed speed at max rating	rpm	2580	2580	2580	2580
Minimum idling speed	rpm	600	600	600	600
Mean piston speed at rated speed	m/s	12	12	12	12
BMEP at max power	kg/cm <sup>2</sup>	22.5	20.5	17.8	16.4
Specific fuel consumption at full load (best value)	g/kWh	229.1	227.5	220.7	221.6
Oil consumption at max rating	(% of fuel cons.)	≤ 0.2			
Minimum starting temperature without auxiliaries	°C	-10			
Oil and oil filter maintenance interval for replacement	hours	600			

\* **Net Power** at flywheel according to ISO 3046/1, after 50 hours running, Fuel Diesel EN 590. Power tolerance 5%.

**Test conditions:** ISO 3046/1, 25 °C air temperature, 100 kPa atmospheric pressure, 30 % relative humidity .

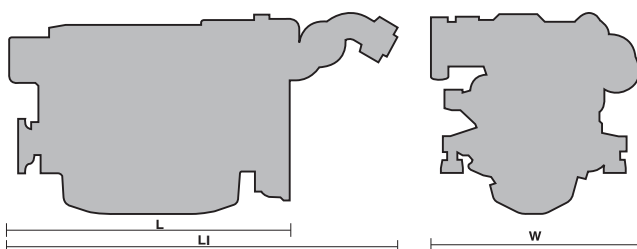


Fuel density = 840 g/l

**A1** = High performance crafts.  
**A2** = Pleasure/commercial vessels.  
 Full throttle operation restricted within 10% of total use period.  
 Cruising speed at engine rpm <90% of rated speed setting - Maximum useage:  
 - 300 hours per year (A1 service)  
 - 1000 hours per year (A2 service)

**B** = Light duty:  
 Full throttle operation restricted within 10% of total use period.  
 Cruising speed at engine rpm <90% of rated speed setting - Maximum useage 1500 hours per year.

**C** = Medium duty:  
 Full throttle operation <25% of use period.  
 Cruising speed at engine rpm <90% of rated speed setting - Maximum useage 3000 hours per year.



**L** = 1465 mm.  
**L1** = 2107 mm.  
**W** = 1107 mm.  
**H** = 1058 mm.  
**Dry weight** (without marine gear) = 1395 kg.

Publication P3D06C002E - 09.11  
 Specifications subject to change without notice.  
 Illustrations may include optional equipment.